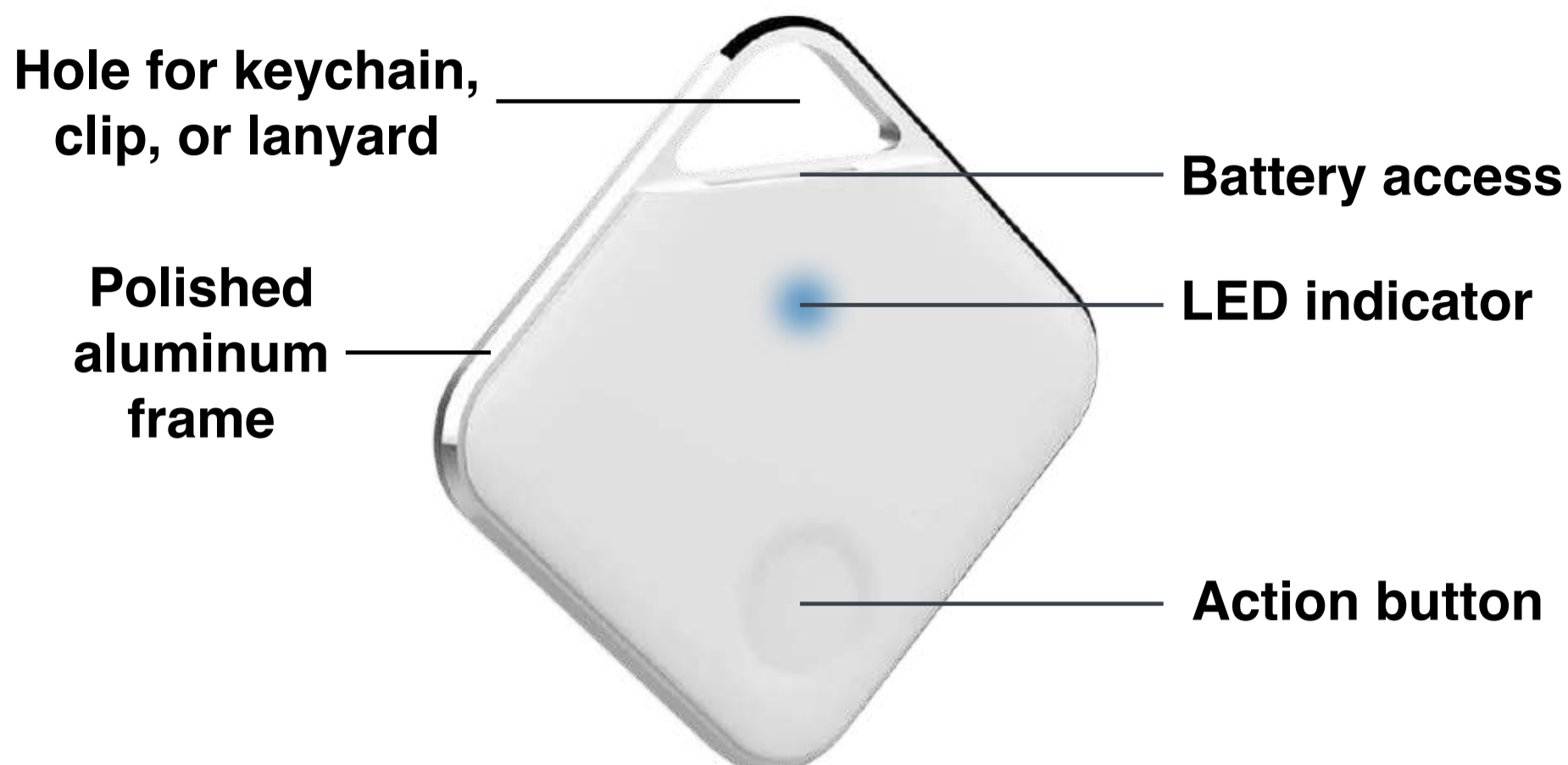


PN: 060-00002

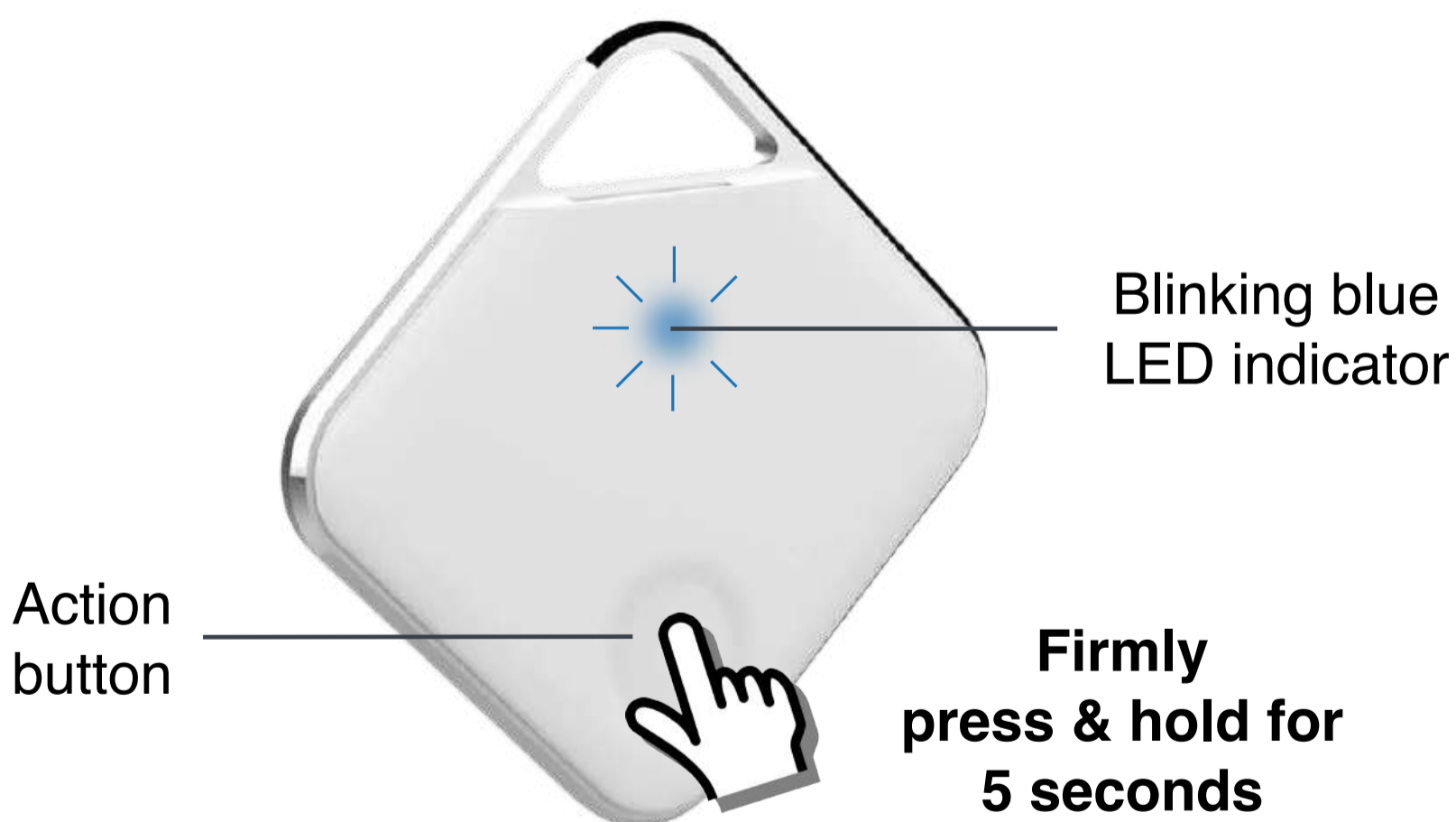


PHONE'S BLUETOOTH MUST REMAIN ON FOR PRD TO WORK PROPERLY

Need help? Call **833-PROX-PRD** (833-776-9773) M-F 9am-4pm PST or email us at: **Support@ProxDevices.com**

1 Turn on PRD

Firmly press and hold down button for 5 seconds until PRD power up sound is heard and a blinking blue LED is shown.



! PRD will automatically turn off if it's not paired to phone within 2 minutes and will need to be turned back on. When PRD turns off, the blue LED will stop flashing.

Some phones stop scanning for Bluetooth devices after a minute. To initiate Bluetooth scanning again, tap on "Scan" or turn Bluetooth off and then back on.

2 Pair PRD to iPhone (iOS)



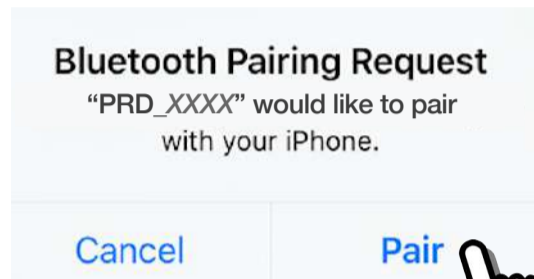
Go to **Settings**



then **Bluetooth**



turn Bluetooth on



select **Pair**



tap on PRD_XXXX
(e.g., PRD_3AE2)

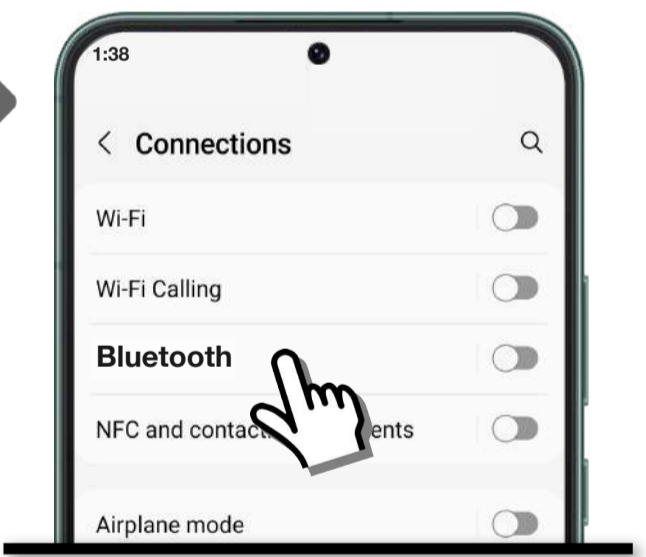
2 Pair PRD to Samsung (Android)



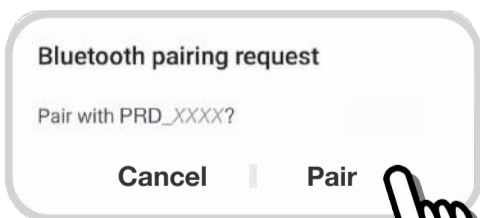
Go to **Settings**



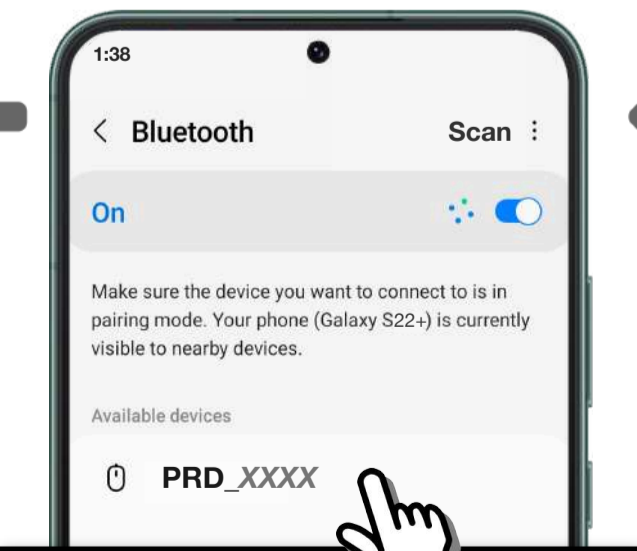
then **Connections**



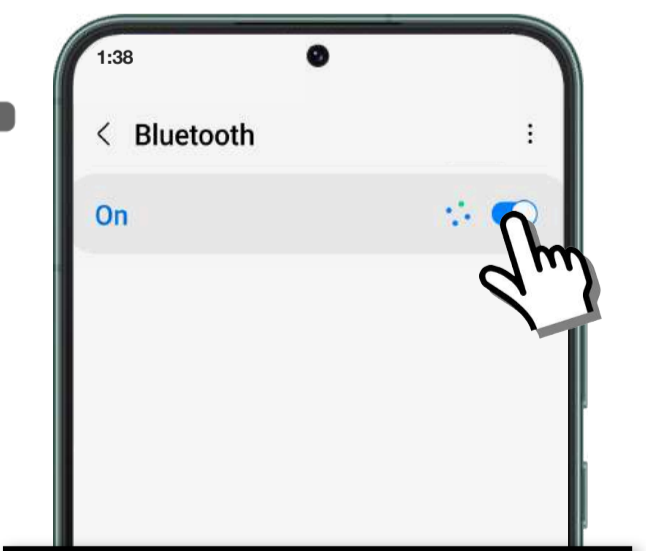
then **Bluetooth**



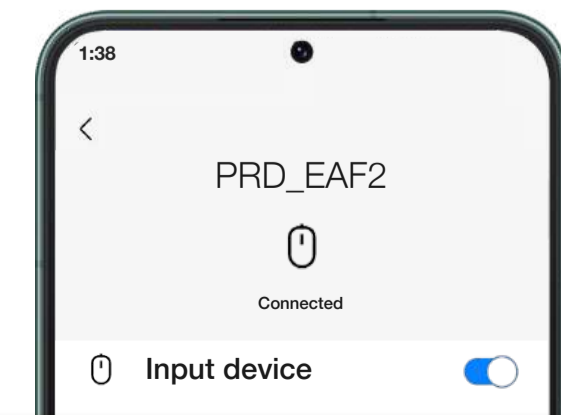
select **Pair**



tap on PRD_XXXX
(e.g., PRD_3AE2)

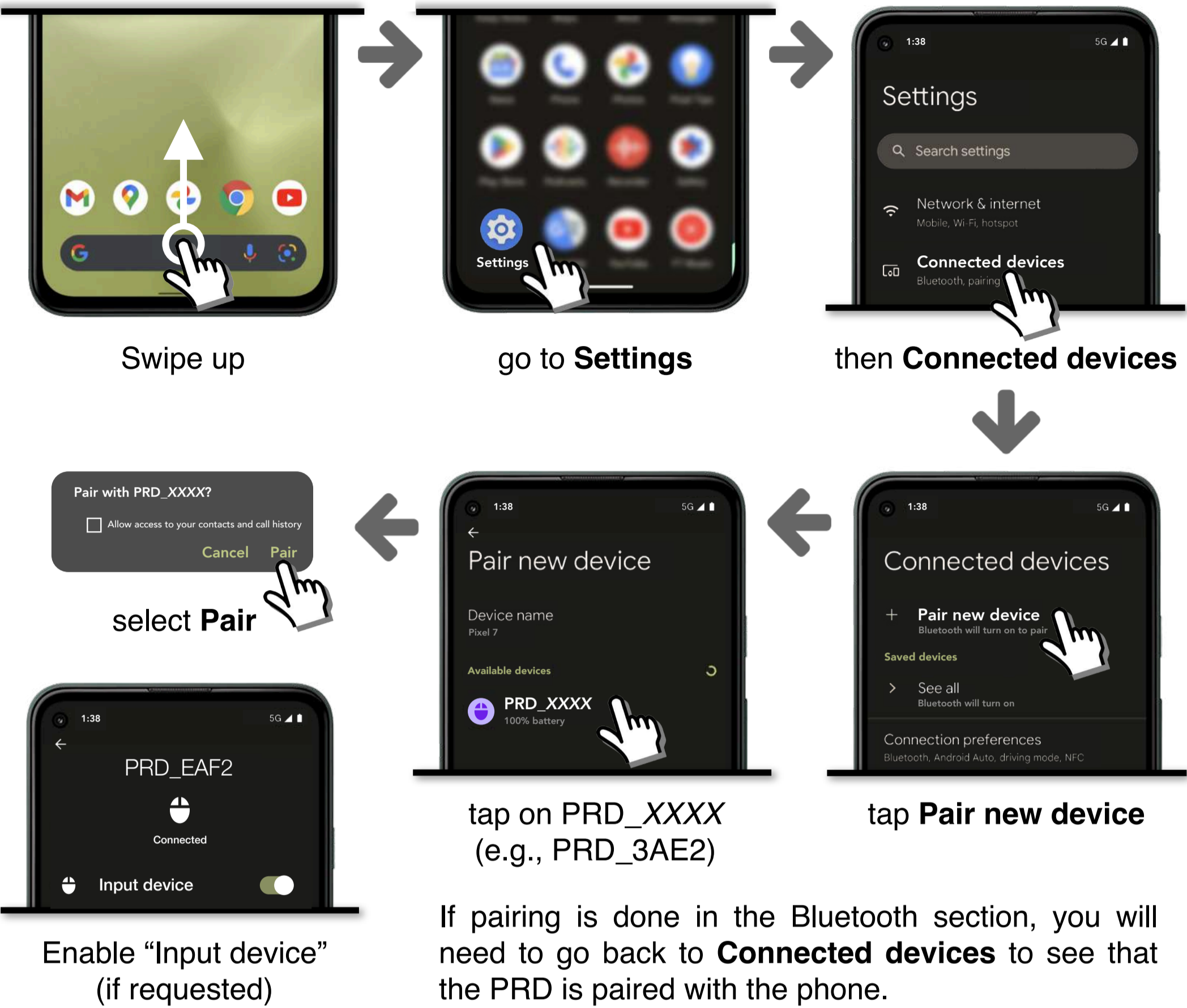


turn Bluetooth on

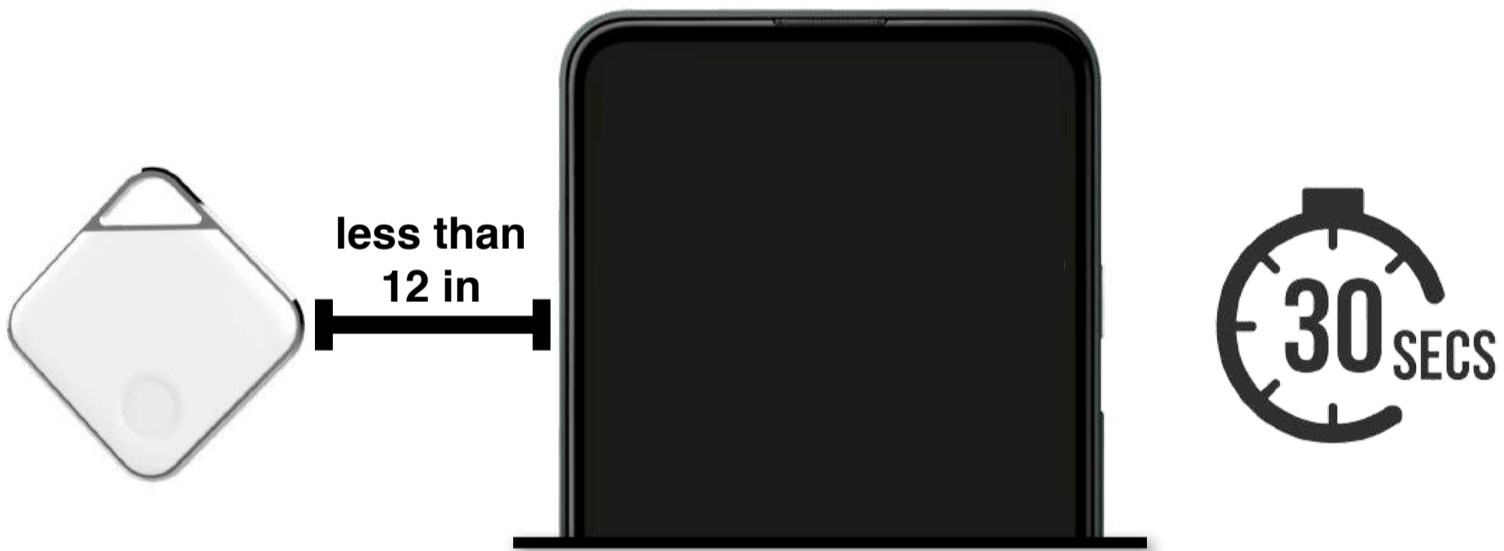


Enable "Input device"
(if requested)

2 Pair PRD to Google Pixel (Android)



3 Keep PRD next to phone for 30 secs



This 30 seconds will ensure pairing is fully established. The phone's Bluetooth must remain turned on for the PRD to function properly.

4 Make PRD alert

On your phone, go to **Settings** and turn off Bluetooth. Bump or move PRD a few inches to hear separation alert. **Turn Bluetooth back on** to hear reconnection sound. (This shows the PRD is working.) **Bluetooth must remain on for the PRD to work properly.**

5 Alert distance

Put your phone down and walk away with the PRD in hand until you hear a phone separation alert. To alert, you **must walk far enough (typically 50 feet to 150 feet)** to break the Bluetooth connection. The PRD will **ONLY** alert while it's moving. Use the PRD at its default settings before making any adjustments. To make adjustments to alert distances or alert tunes, please see the online User Manual.

Access Online User Manual



Scan QR code with
phone camera to view
online User Manual
or type the URL below
in your browser

ProxDevices.com/PRD-Manual

Patented & Patent Pending Technology
© 2024 Prox Devices, Inc. All rights reserved.

Prox Devices® and Prox PRD® are registered trademarks of Prox Devices, Inc. Apple, iPhone, and iOS are trademarks of Apple Inc. Android™ and Pixel are trademarks of Google Inc. The Bluetooth® word, mark, and logos are registered trademarks owned by Bluetooth SIG, Inc. and any use of such marks by Prox Devices, Inc. are under license.



Still need help?

99% of issues can be resolved with a brief call to our friendly, knowledgeable, U.S.-based, customer support team. We are here to help and will work hard to quickly resolve any issues you may have.

833-PROX-PRD (833-776-9773)
M-F 9am-4pm PST

Support@ProxDevices.com

Advanced Alert Technology™



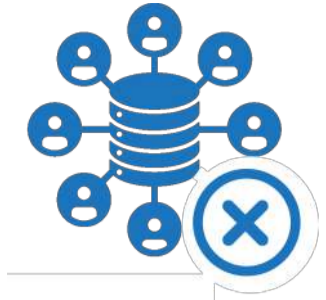
No app required
No passwords



No registration
No subscription



No tracking
100% privacy



No data collected
No data sold

Important Notes

- Your Prox PRD® is designed to be kept on 24/7. You must also keep your phone's Bluetooth on for the PRD to function properly. (If the PRD must be turned off, firmly press and hold the button until there are no sounds for several seconds.)
- Different environments may result in different alert ranges for the same alert distance setting. Do initial testing at the default alert distance before making any adjustments. PRD alerts before you get too far from your phone (approx. 50 feet to 150 feet).
- If you like to keep your keys in your pocket with the PRD attached, and you regularly walk in and out of proximity of your phone, to avoid unwanted alerts inside your home or office, you may find it useful to keep the PRD in the pocket of the driver's side car door. When your car door is opened, the PRD will wake up and alert if you don't have your phone with you, thus preventing you from driving off without your phone.
- There are two operating modes: HOME (default) — PRD alerts only when moving away from the phone; and TRAVEL — PRD alerts when moving away from the phone OR phone is moving away from the PRD. To switch to TRAVEL mode, see online User Manual.

Battery Safety

This product contains a preinstalled CR2032 3V (LiMnO₂) coin battery.

KEEP OUT OF REACH OF CHILDREN. If you suspect any swallowing, immediately take your child to the emergency room; have the doctor call 800-498-8666 (the National Battery Ingestion Hotline). Inform them that the battery type swallowed is a CR2032 coin cell Lithium/Manganese Dioxide battery.

Remove and immediately recycle or dispose of used batteries according to local regulations and keep away from children. Do NOT dispose of batteries in household trash or incinerate. Even used batteries may cause severe injury or death. Non-rechargeable batteries are not to be recharged. Do not force discharge, recharge, disassemble, heat above 200°F or incinerate. Doing so may result in injury due to venting, leakage or explosion resulting in chemical burns. Ensure the batteries are installed correctly according to polarity (+ and -). Do not mix old and new batteries, different brands or types of batteries, such as alkaline, carbon-zinc, or rechargeable batteries. Remove and immediately recycle or dispose of batteries from equipment not used for an extended period of time according to local regulations. Always completely secure the battery compartment. If the battery compartment does not close securely, stop using the product, remove the batteries, and keep them away from children.

⚠️ WARNING

- **INGESTION HAZARD:** This product contains a button cell or coin battery.
- **DEATH** or serious injury can occur if ingested.
- A swallowed button cell or coin battery can cause **Internal Chemical Burns** in as little as **2 hours**.
- **KEEP** new and used batteries **OUT OF REACH OF CHILDREN**.
- **Seek immediate medical attention** if a battery is suspected to be swallowed or inserted inside any part of the body.



Low Battery Warning: PRD will chirp every two (2) seconds upon movement. To disable chirp, press and hold the button on the PRD until there are no sounds for several seconds and the PRD turns off.

FCC Compliance

This device complies with part 15 of the FCC Rules. Operation is subject to the following two conditions: (1) This device may not cause harmful interference, and (2) this device must accept any interference received, including interference that may cause undesired operation.

Note: This equipment has been tested and found to comply with the limits for a Class B digital device, pursuant to part 15 of the FCC Rules. These limits are designed to provide reasonable protection against harmful interference in a residential installation.

This equipment generates, uses, and can radiate radio frequency energy and, if not installed and used in accordance with the instructions, may cause harmful interference to radio communications. However, there is no guarantee that interference will not occur in a particular installation.

If this equipment does cause harmful interference to radio or television reception, which can be determined by turning the equipment off and then on, the user is encouraged to try to correct the interference by one or more of the following measures:

- Reorient or relocate the receiving antenna.
- Increase the separation between the equipment and receiver.
- Connect the equipment into an outlet on a circuit different from that to which the receiver is connected.
- Consult the dealer or an experienced radio / TV technician for help.

Unauthorized changes or modifications to the Prox PRD® could void the wireless compliance and negate the user's authority to operate the Prox PRD.

Monitoring

⚠ WARNING

Do not use the Prox PRD® as a wireless leash (for monitoring proximity) of children or animals.

Warranty

Prox Devices' products in the form of devices or firmware ("Products") carry a one (1) year limited warranty providing rights separate to those provided by consumer law including, but not limited to, those relating to non-conforming goods. This is a voluntary manufacturer's warranty with benefits that is in addition to rights provided by consumer law and it does not exclude, limit, or suspend a buyer's rights arising from or under consumer law. This one year limited warranty terms and conditions shall not apply to consumer law claims. All claims made under this warranty will be governed by the terms set out here.

Products are warranted against defects in materials and workmanship for a period of one (1) year from the date of the original retail purchase, as noted on the purchase receipt ("Warranty Period") when used in accordance with the applicable User Manual. If a defect arises during the Warranty Period, Prox Devices, at its option, will either exchange the Product with another Product of equivalent functionality either from new and/or previously used parts that are equivalent to new in performance and reliability, or refund the original purchase price. This warranty excludes batteries unless failure has occurred due to a defect in materials or workmanship. Damage resulting from modifications, unauthorized repairs, abuse, or other causes that are not defects in materials and workmanship are also excluded from this warranty.

Products are not designed to be submerged or exposed to water for extended periods. Any damage to the Products due to water is not covered under warranty.

For complete warranty information, please refer to the Warranty section on the website (<https://www.proxdevices.com/warranty>).