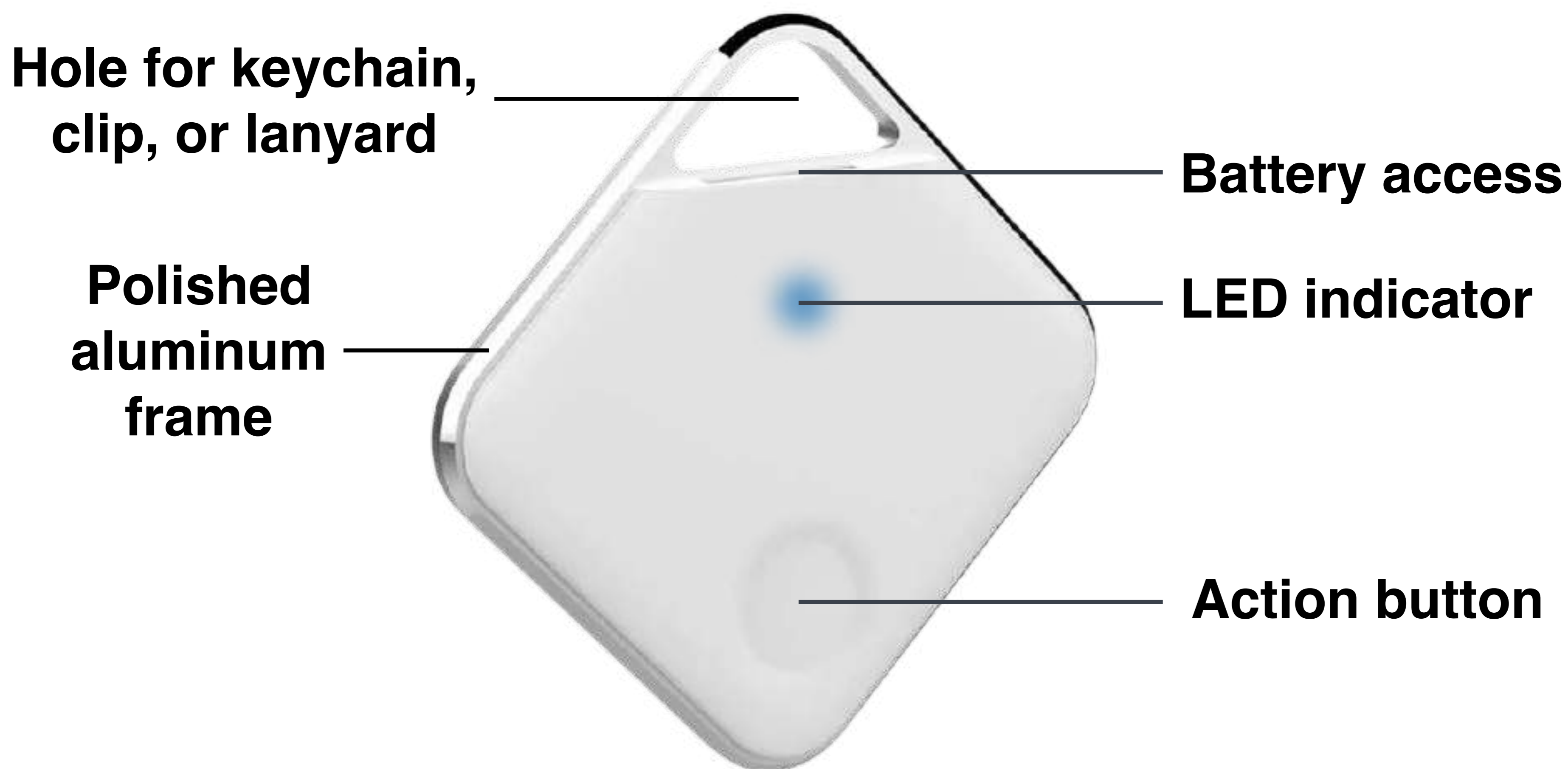


Prox PRD[®]

Quick Start Guide

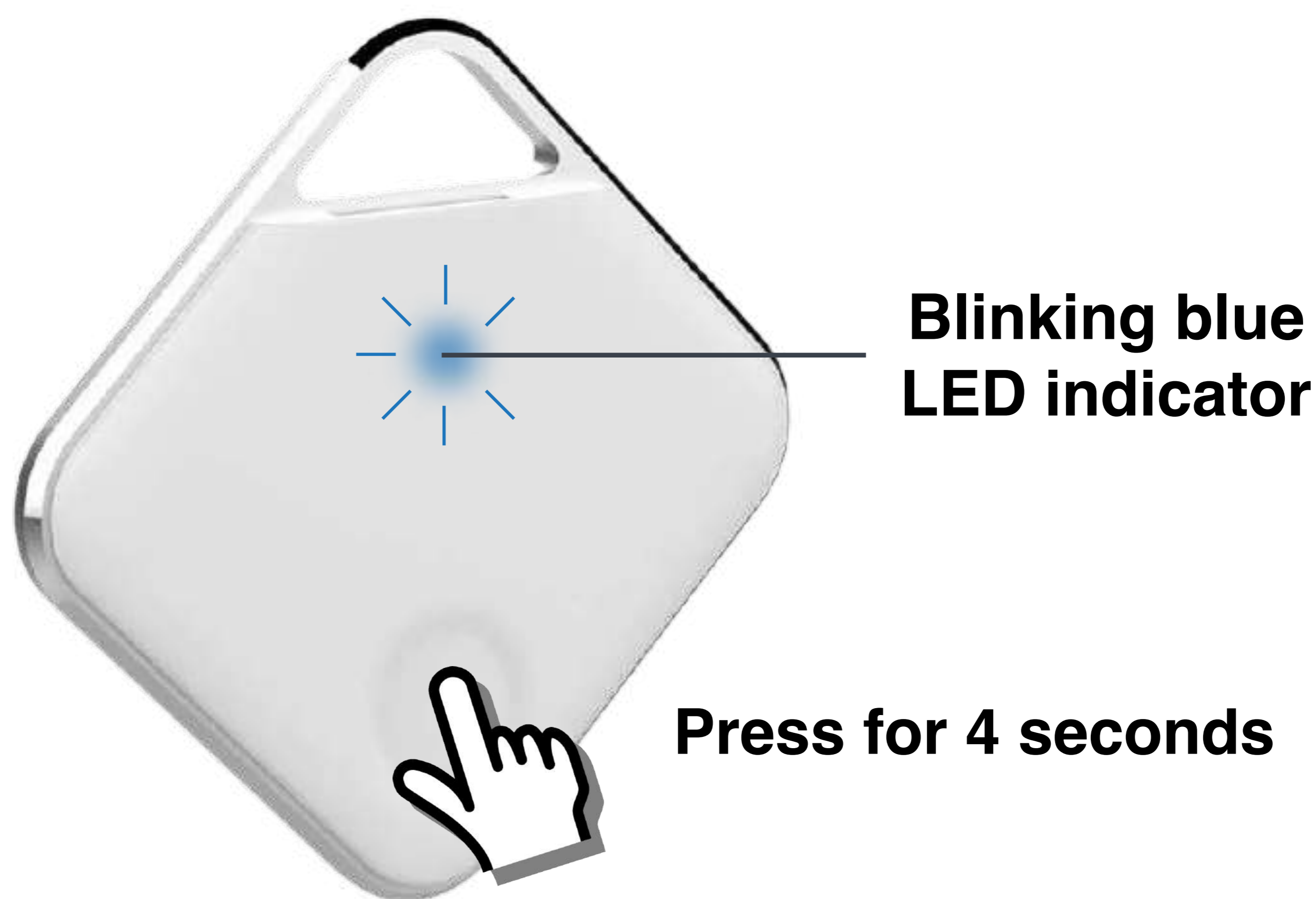
works with | Apple iPhone
Samsung
Google Pixel



Need help? Email us at: Support@ProxDevices.com
or call **833-PROX-PRD** (833-776-9773) M-F 9am-4pm PST

1 Turn on PRD

Firmly hold down button for 4 seconds until PRD power up sound is heard and a blinking blue LED is shown.



! PRD will automatically turn off if it's not paired to phone within 2 minutes and will need to be turned back on. When PRD turns off, the blue LED will stop flashing.

Some phones stop scanning for Bluetooth devices after a minute. To initiate Bluetooth scanning again, tap on "Scan" or turn Bluetooth off and then back on.

2 Pair PRD to iPhone (iOS)



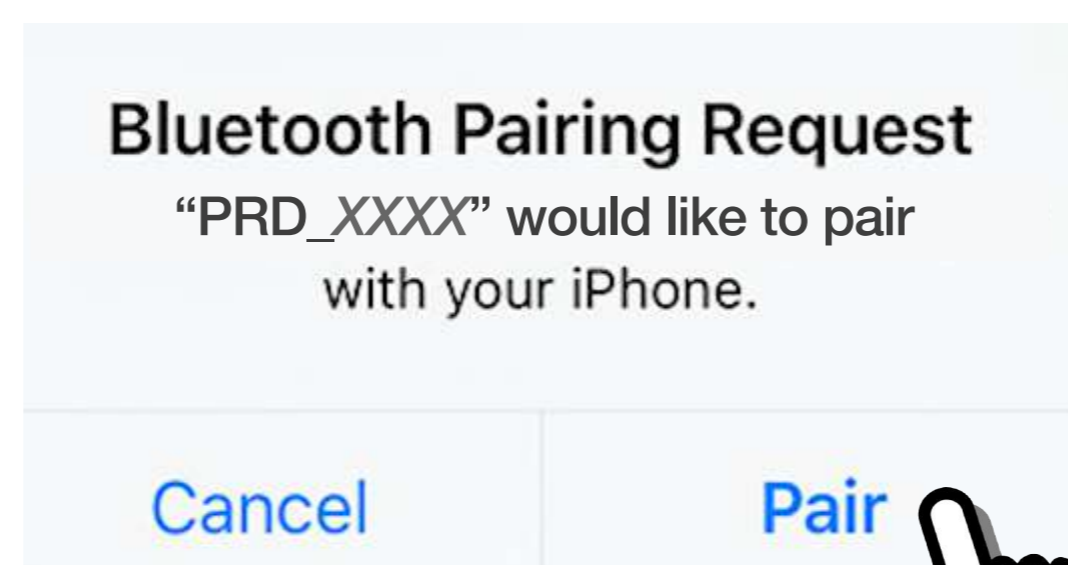
Go to **Settings**



then **Bluetooth**



turn Bluetooth on



select **Pair**



tap on PRD_XXXX
(e.g., PRD_3AE2)

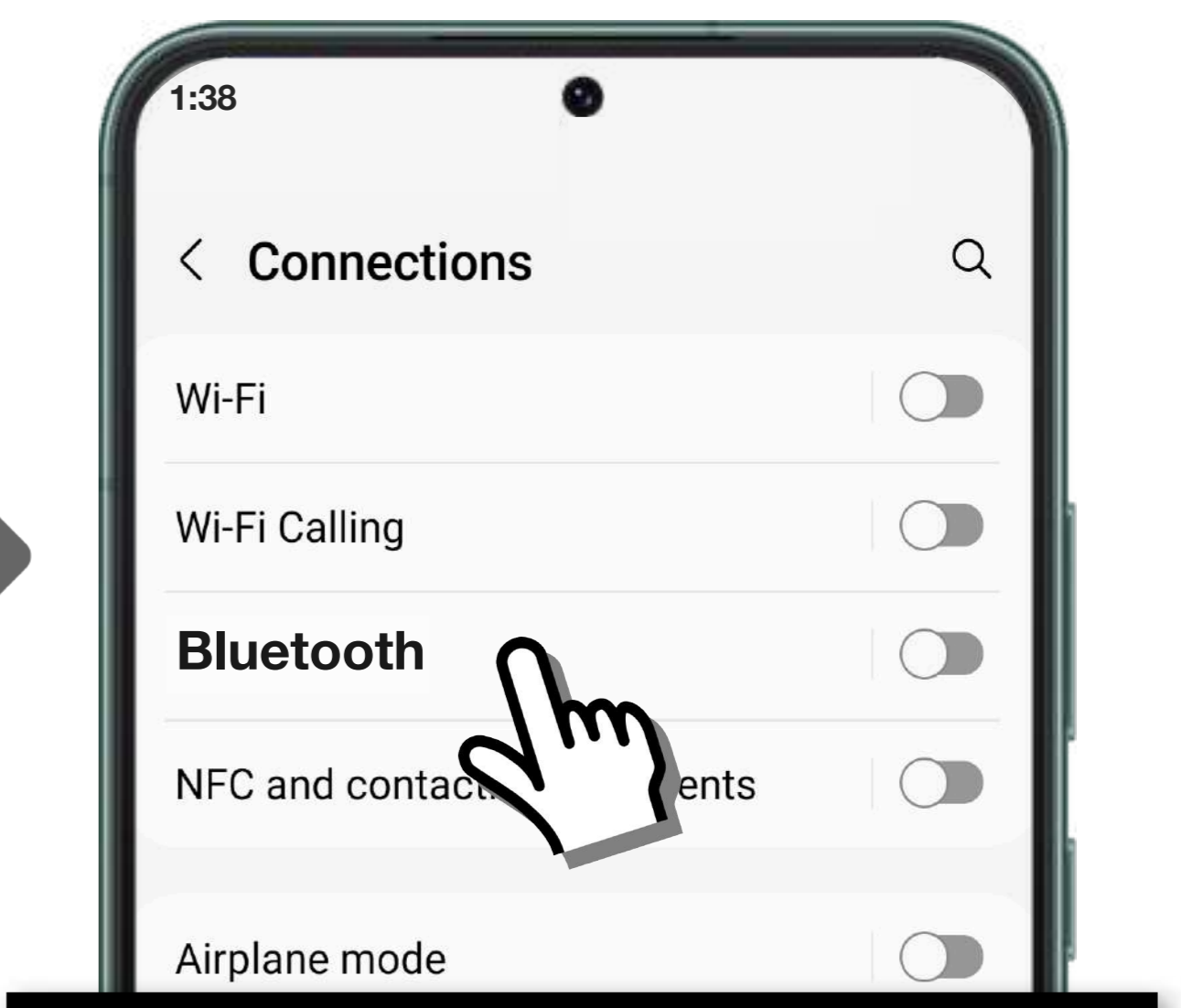
2 Pair PRD to Samsung (Android)



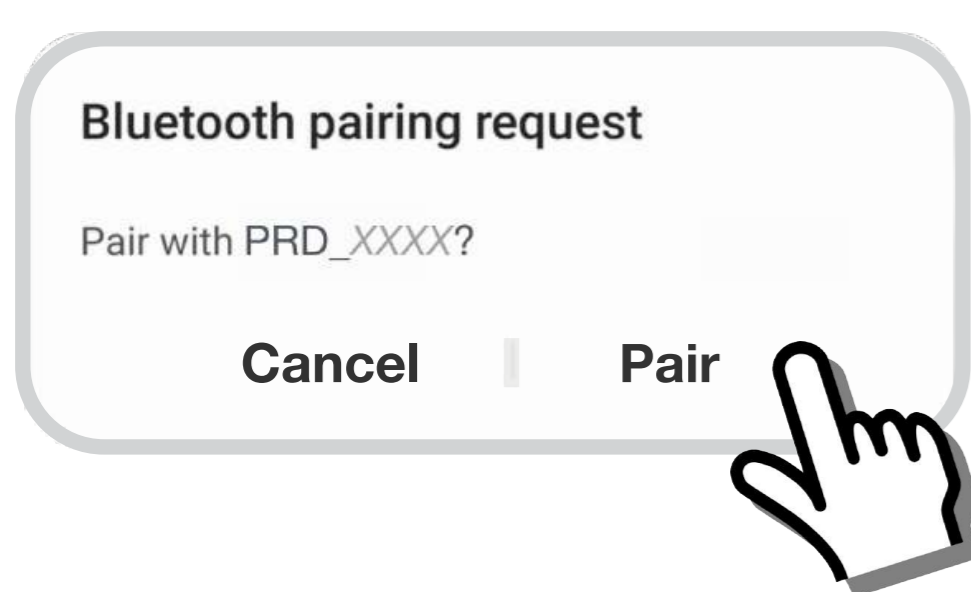
Go to **Settings**



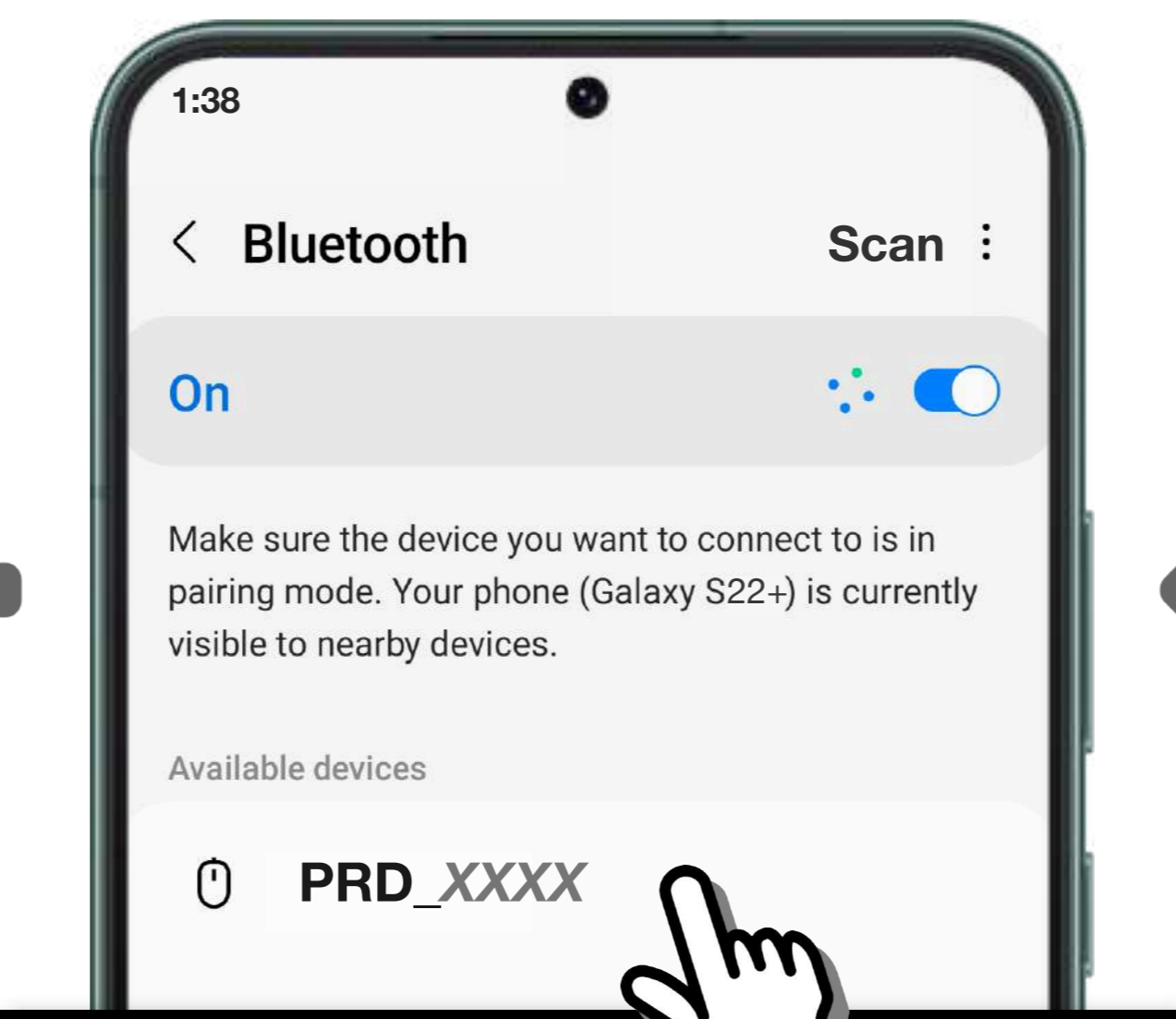
then **Connections**



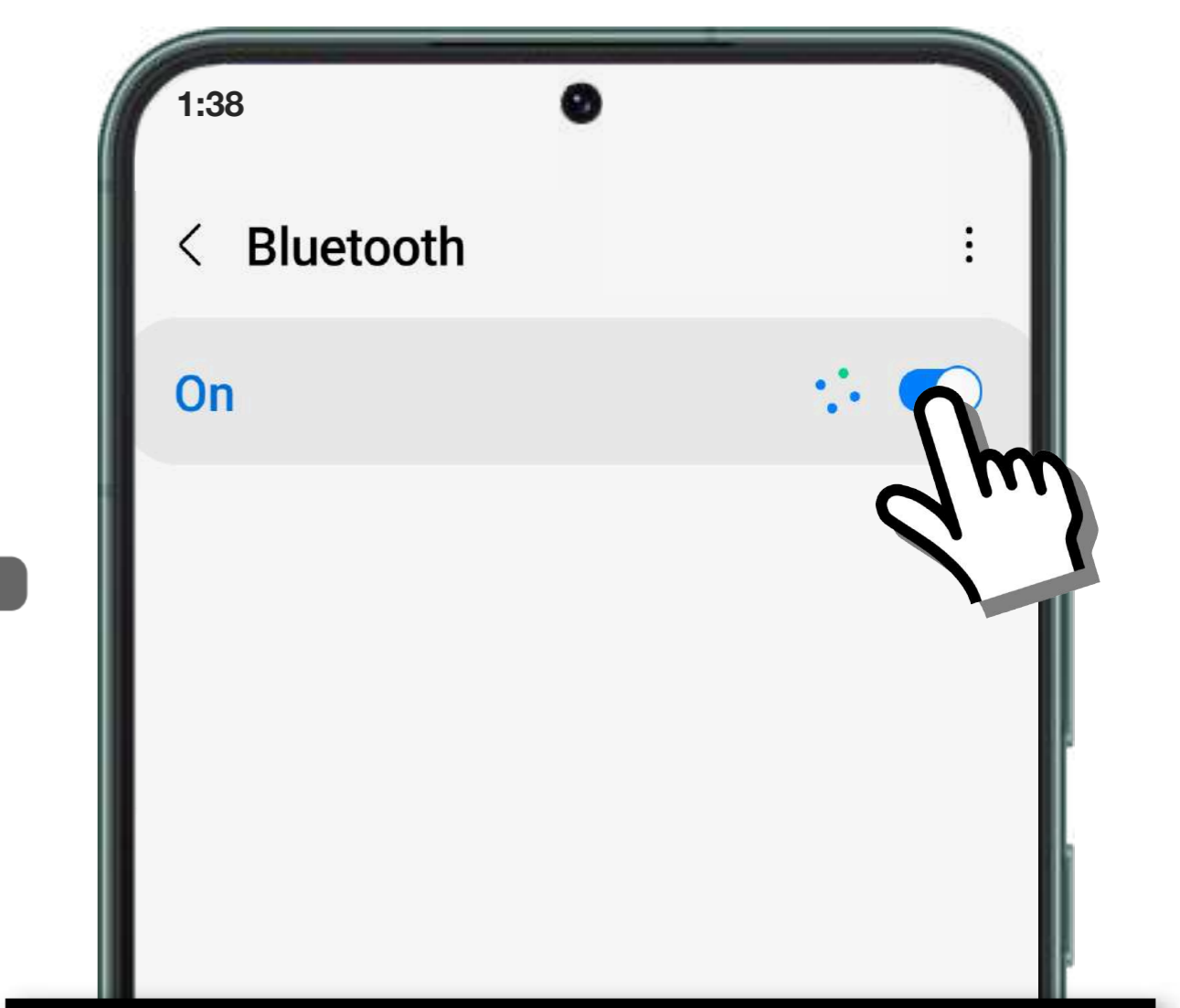
then **Bluetooth**



select **Pair**

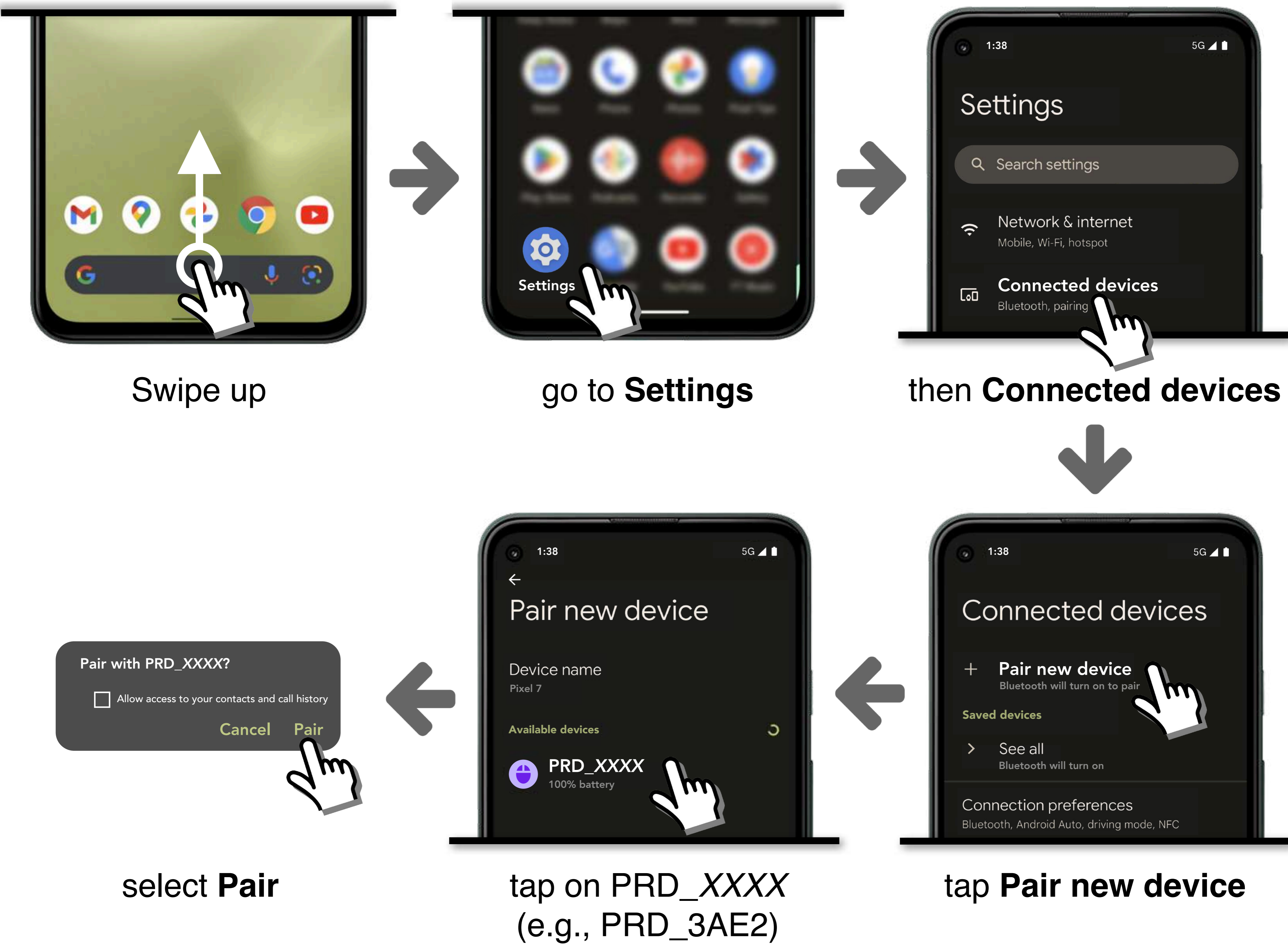


tap on PRD_XXXX
(e.g., PRD_3AE2)



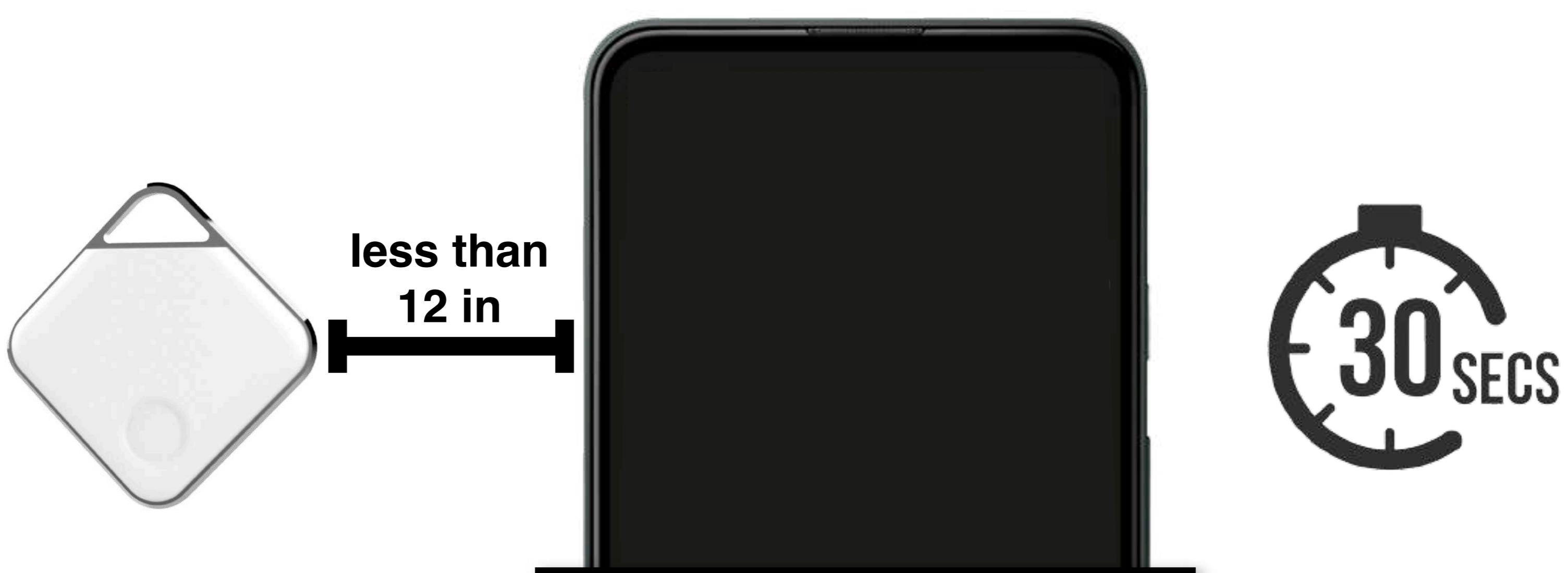
turn Bluetooth on

2 Pair PRD to Google Pixel (Android)



If pairing is done in the Bluetooth section, you will need to go back to **Connected devices** to see that the PRD is paired with the phone.

3 Keep PRD next to phone for 30 secs

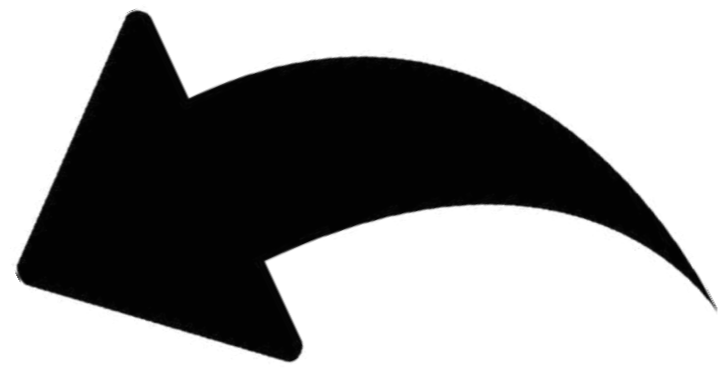


This 30 seconds will ensure pairing is fully established. The phone's Bluetooth must remain turned on for the PRD to function properly.

4 Test

On your phone, go to **Settings** and turn off Bluetooth. Move PRD to hear separation alert. Turn Bluetooth back on to hear reconnect sound. (This shows that the PRD is working.) Put phone down and walk away with PRD until you hear a separation alert (approximately 50 feet to 150 feet). This is your default alert distance for this environment. Use the PRD at its default settings before making any adjustments. To make adjustments to alert distances, please see the online User Manual.

Access Online User Manual



Scan QR code with phone camera to view online User Manual or type the URL below in your browser

ProxDevices.com/PRD-Manual

Patented & Patent Pending Technology
© 2023 Prox Devices, Inc. All rights reserved.

Prox Devices® and Prox PRD® are registered trademarks of Prox Devices, Inc. Apple, iPhone, and iOS are trademarks of Apple Inc. Android™ and Pixel are trademarks of Google Inc. The Bluetooth® word, mark, and logos are registered trademarks owned by Bluetooth SIG, Inc. and any use of such marks by Prox Devices, Inc. are under license.



Still need help?

Please contact our friendly customer support team before returning to the retailer. We are here to help and will work hard to resolve any issues you may have.

833-PROX-PRD (833-776-9773)
Support@ProxDevices.com

Advanced Alert Technology™



No app required
No passwords



No registration
No subscription



No tracking
100% privacy



No data collected
No data sold

Important Notes

- Your Prox PRD® is designed to be kept on 24/7. You must also keep your phone's Bluetooth on for the PRD to function properly. (If the PRD must be turned off, firmly press and hold the button until there are no sounds for several seconds.)
- Different environments may result in different alert ranges for the same alert distance setting. Do initial testing at the default alert distance before making any adjustments. PRD alerts before you get too far from your phone (approx. 50 feet to 150 feet).
- If you like to keep your keys in your pocket with the PRD attached, and you regularly walk in and out of proximity of your phone, to avoid unwanted alerts inside your home or office, you may find it useful to keep the PRD in the pocket of the driver's side car door. When your car door is opened, the PRD will wake up and alert if you don't have your phone with you, thus preventing you from driving off without your phone.
- There are two operating modes: HOME (default) — PRD alerts only when moving away from the phone; and TRAVEL — PRD alerts when moving away from the phone OR phone is moving away from the PRD. To switch to TRAVEL mode, see online User Manual.

Low Battery Warning: PRD will chirp every two (2) seconds upon movement. To disable chirp, press and hold the button on the PRD until there are no sounds for several seconds and the PRD turns off.

Battery Safety

1. KEEP OUT OF REACH OF CHILDREN. Swallowing may lead to serious injury or death in as little as 2 hours due to chemical burns and potential perforation of the esophagus. If you suspect any swallowing, immediately take your child to the emergency room; have the doctor phone 800-498-8666 (the National Battery Ingestion Hotline). Inform them that the battery type swallowed is a CR2032 coin cell Lithium / Manganese Dioxide battery.
2. Battery compartment design. To prevent children from removing batteries, the PRD was designed to allow access to the battery compartment only with a tool. Keep the batteries out of reach of small children and pets.
3. Only replace the PRD battery with another CR2032 LiMnO₂ battery. Using an improper battery may result in battery leakage, fire, or explosion.
4. Do not crush or short the battery (at the positive and negative terminals). Do not expose the battery to fire, excessively high temperatures (not to exceed 200°F), or submerge in water. This battery contains Lithium and Manganese, and doing so may result in battery leakage, fire, or explosion.

Monitoring

Do not use the Prox PRD® as a wireless leash (for monitoring proximity) of children or animals.

FCC Compliance

This device complies with part 15 of the FCC Rules. Operation is subject to the following two conditions: (1) This device may not cause harmful interference, and (2) this device must accept any interference received, including interference that may cause undesired operation.

Note: This equipment has been tested and found to comply with the limits for a Class B digital device, pursuant to part 15 of the FCC Rules. These limits are designed to provide reasonable protection against harmful interference in a residential installation.

This equipment generates, uses, and can radiate radio frequency energy and, if not installed and used in accordance with the instructions, may cause harmful interference to radio communications. However, there is no guarantee that interference will not occur in a particular installation.

If this equipment does cause harmful interference to radio or television reception, which can be determined by turning the equipment off and then on, the user is encouraged to try to correct the interference by one or more of the following measures:

- Reorient or relocate the receiving antenna.
- Increase the separation between the equipment and receiver.
- Connect the equipment into an outlet on a circuit different from that to which the receiver is connected.
- Consult the dealer or an experienced radio / TV technician for help.

Unauthorized changes or modifications to the Prox PRD® could void the wireless compliance and negate the user's authority to operate the Prox PRD.

Warranty

Prox Devices' products in the form of devices or firmware ("Products") carry a one (1) year limited warranty providing rights separate to those provided by consumer law including, but not limited to, those relating to non-conforming goods. This is a voluntary manufacturer's warranty with benefits that is in addition to rights provided by consumer law and it does not exclude, limit, or suspend a buyer's rights arising from or under consumer law. This one year limited warranty terms and conditions shall not apply to consumer law claims. All claims made under this warranty will be governed by the terms set out here.

Products are warranted against defects in materials and workmanship for a period of one (1) year from the date of the original retail purchase, as noted on the purchase receipt ("Warranty Period") when used in accordance with the applicable User Manual. If a defect arises during the Warranty Period, Prox Devices, at its option, will either exchange the Product with another Product of equivalent functionality either from new and/or previously used parts that are equivalent to new in performance and reliability, or refund the original purchase price. This warranty excludes batteries unless failure has occurred due to a defect in materials or workmanship. Damage resulting from modifications, unauthorized repairs, abuse, or other causes that are not defects in materials and workmanship are also excluded from this warranty.

Products are not designed to be submerged or exposed to water for extended periods. Any damage to the Products due to water is not covered under warranty.

For complete warranty information, please refer to the Warranty section on the website (<https://www.proxdevices.com/warranty>).